



Dock Leveller HP Model

Spare Parts List

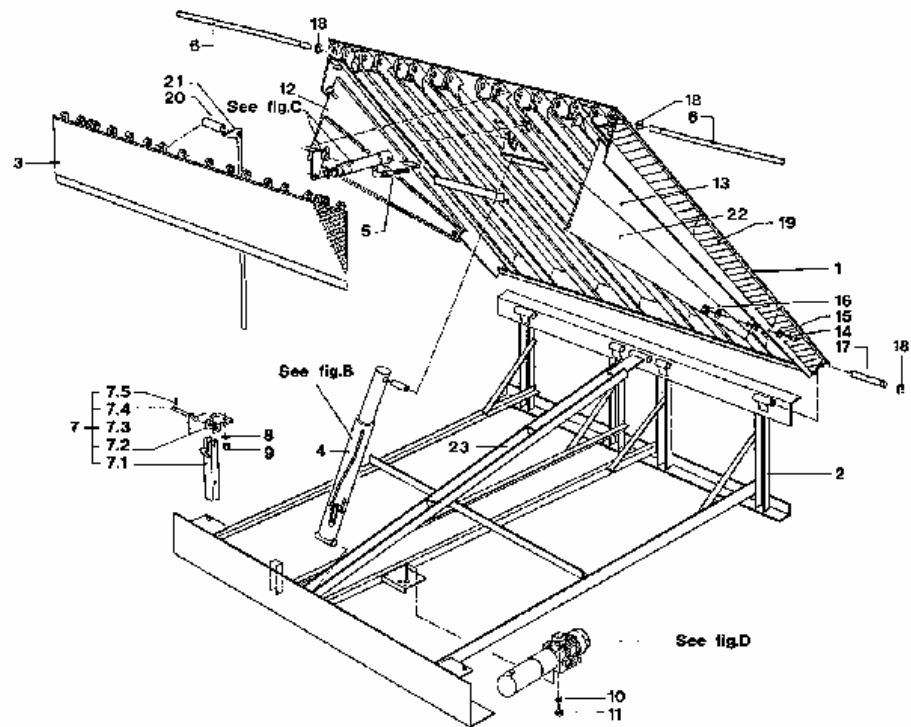


FIG. C - LIP CYLINDER

INDEX	REFERENCE	DESCRIPTION
	HP/12 700	
1	01.540.850	Cylinder
2	04.230.050	Lip lifter
3	01.510.020	Pin
4	65.077.101	Roll pin
5	02.335.019	Pin
6	65.062.028	Lock washer
7	02.250.101	Hose lip cylinder
8	68.790.013	Adaptor
	01.510.854	Seal replacement kit

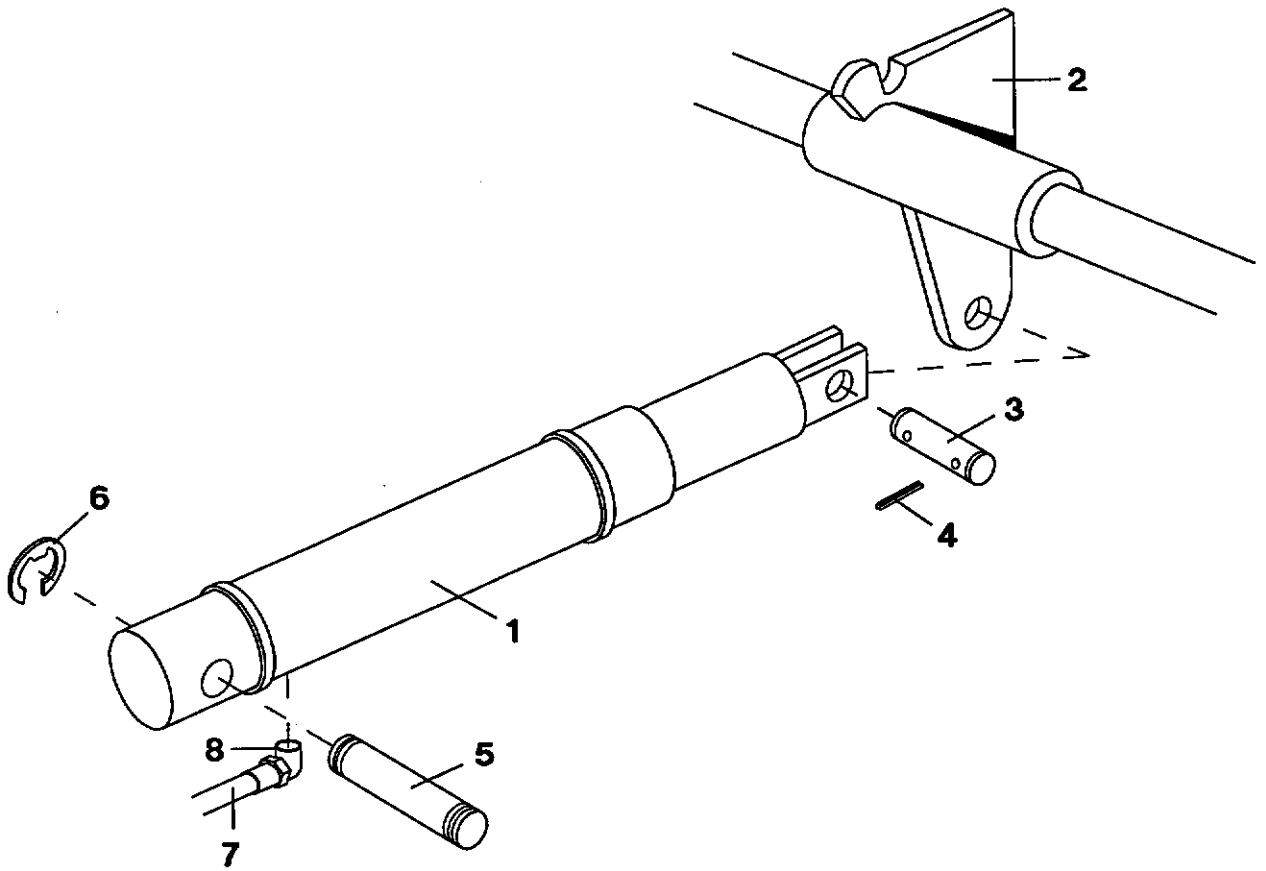


FIG. A - PARTS OF SUBFRAME, LIP AND DECK

INDEX	REFERENCE	DESCRIPTION
	HP/12 700	
1	04.261.000	Deck
2	04.262.000	Subframe
3	04.243.000	Lip
4	01.510.426	Hose main cylinder
5	02.250.101	Hose lip cylinder
6	04.240.014	Lip shaft
7	04.230.110	CTL support assembly
7.1	04.230.130	Support
7.2	01.410.150	Support
7.3	00.030.195	Spring
7.4	01.410.101	Hinge pin
7.5	65.074.216	Cotter pin
8	65.058.032	Spring washer
9	65.050.136	Nut
10	65.058.028	Spring washer
11	65.003.403	Bolt
12	02.250.016	Toe protector R
13	02.250.015	Toe protector L
14	65.025.014	Bolt
15	65.055.712	Washer
16	65.051.034	Nut
17	04.230.011	Hinge pin
18	65.062.041	Lock washer
19	90.899.024	Marking
20	04.230.017	Spacer
21	04.250.023	Maintenance strut
22	02.250.017	Siding lamel
23	02.250.025	Beam

FIG. A

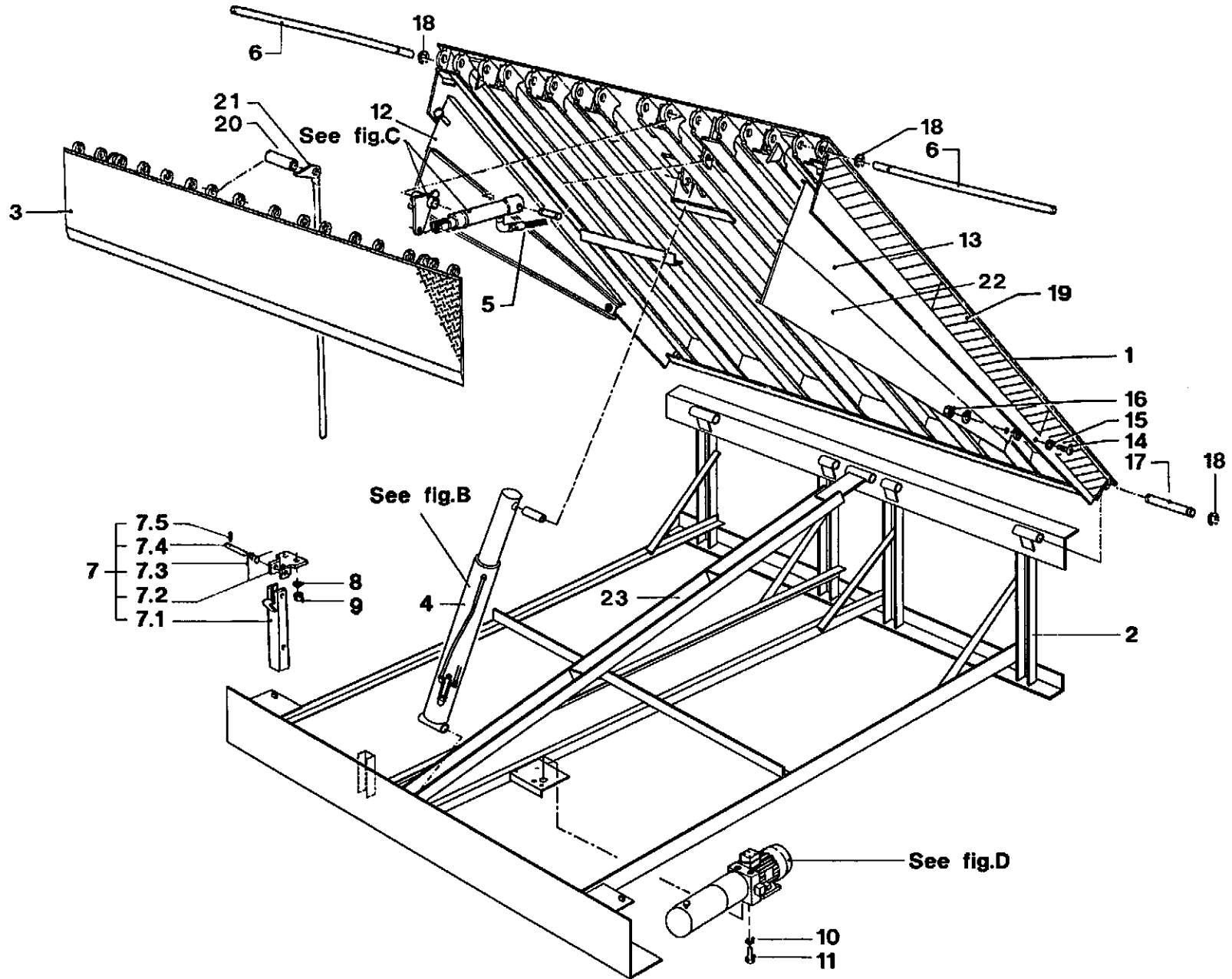


FIG. B - MAIN CYLINDER

INDEX	REFERENCE	DESCRIPTION
	HP/12 700	
1	04.250.100	Cylinder (Including pos. 4 and 5)
2	04.230.019	Pin
3	04.230.011	Pin
4	04.250.102	Adaptor
5	04.250.103	Valve
6	01.510.426	Hose main cylinder
7	65.062.041	Lock washer
	04.250.101	Seal replacement kit

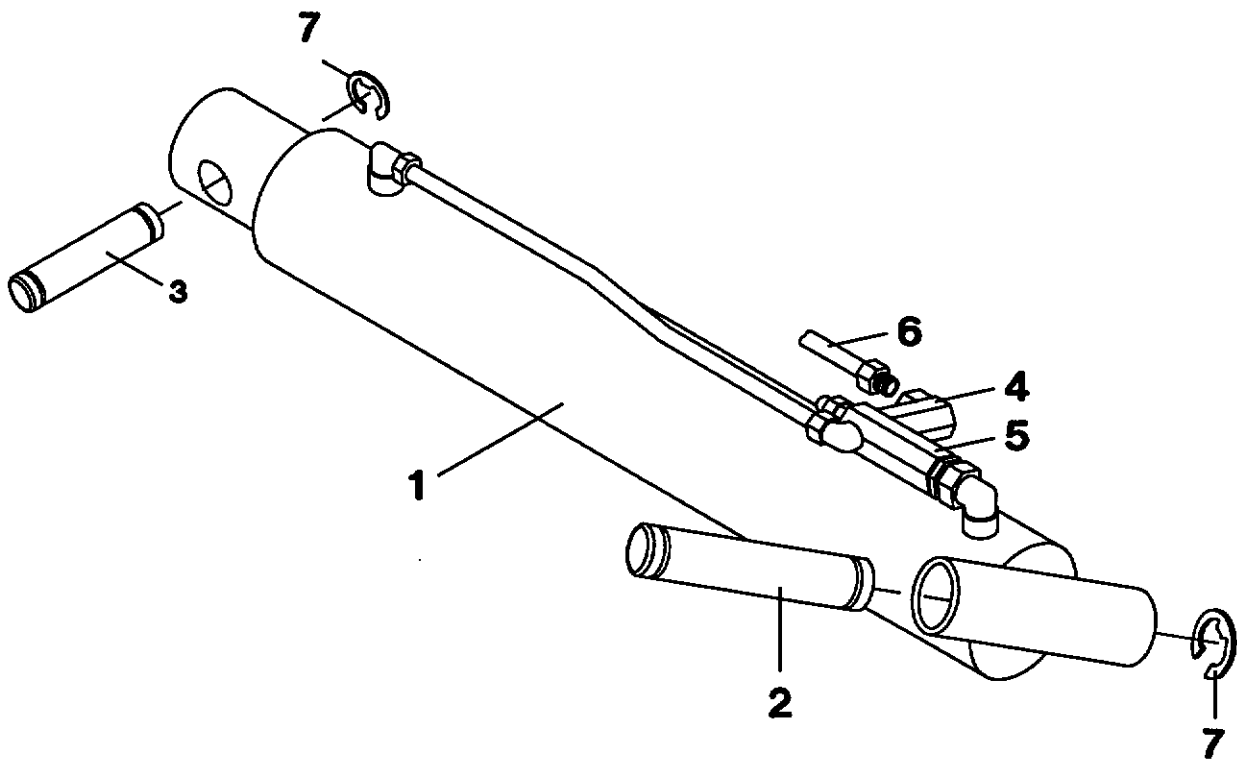


FIG. C - LIP CYLINDER

INDEX	REFERENCE	DESCRIPTION
	HP/12 700	
1	01.540.850	Cylinder
2	04.230.050	Lip lifter
3	01.510.020	Pin
4	65.077.101	Roll pin
5	02.335.019	Pin
6	65.062.028	Lock washer
7	02.250.101	Hose lip cylinder
8	68.790.013	Adaptor
	01.510.854	Seal replacement kit

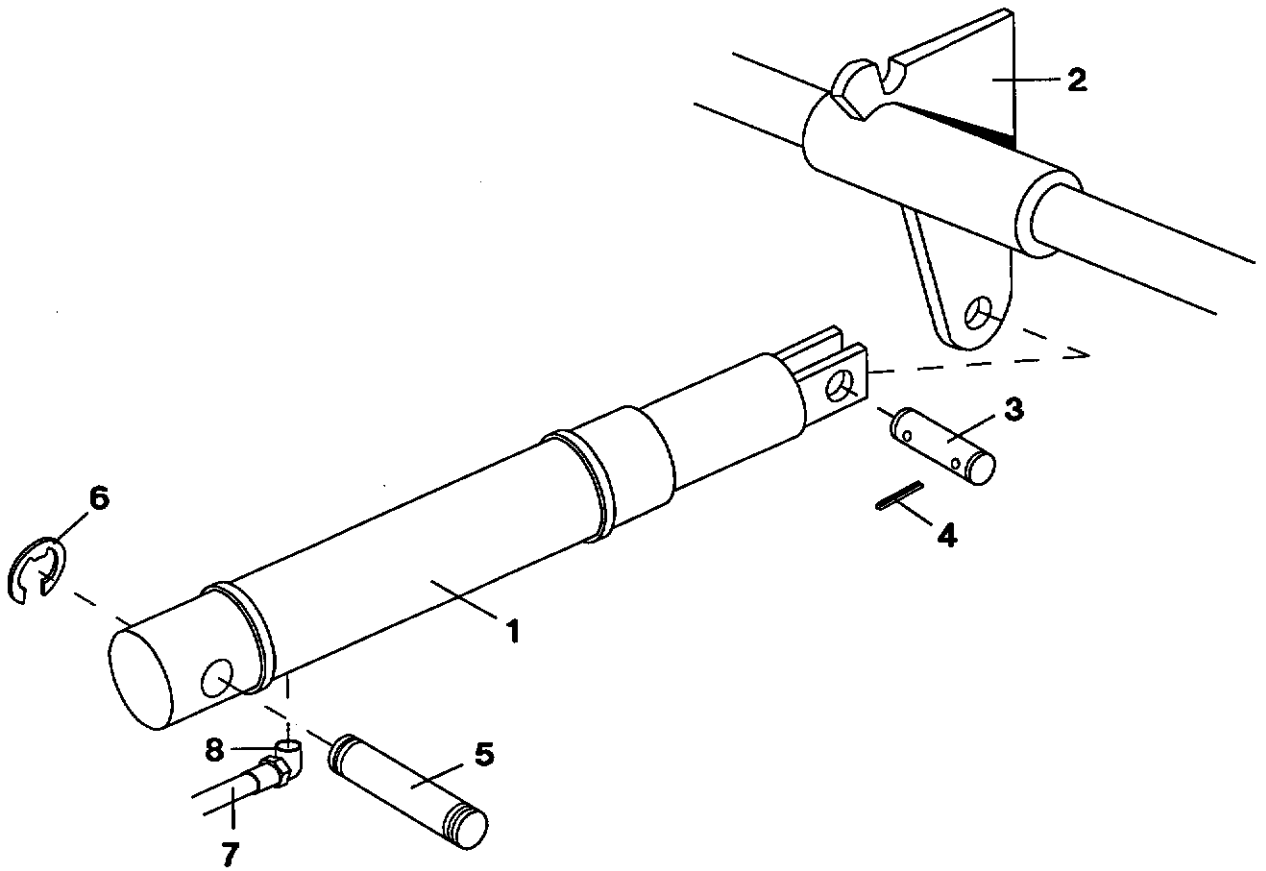
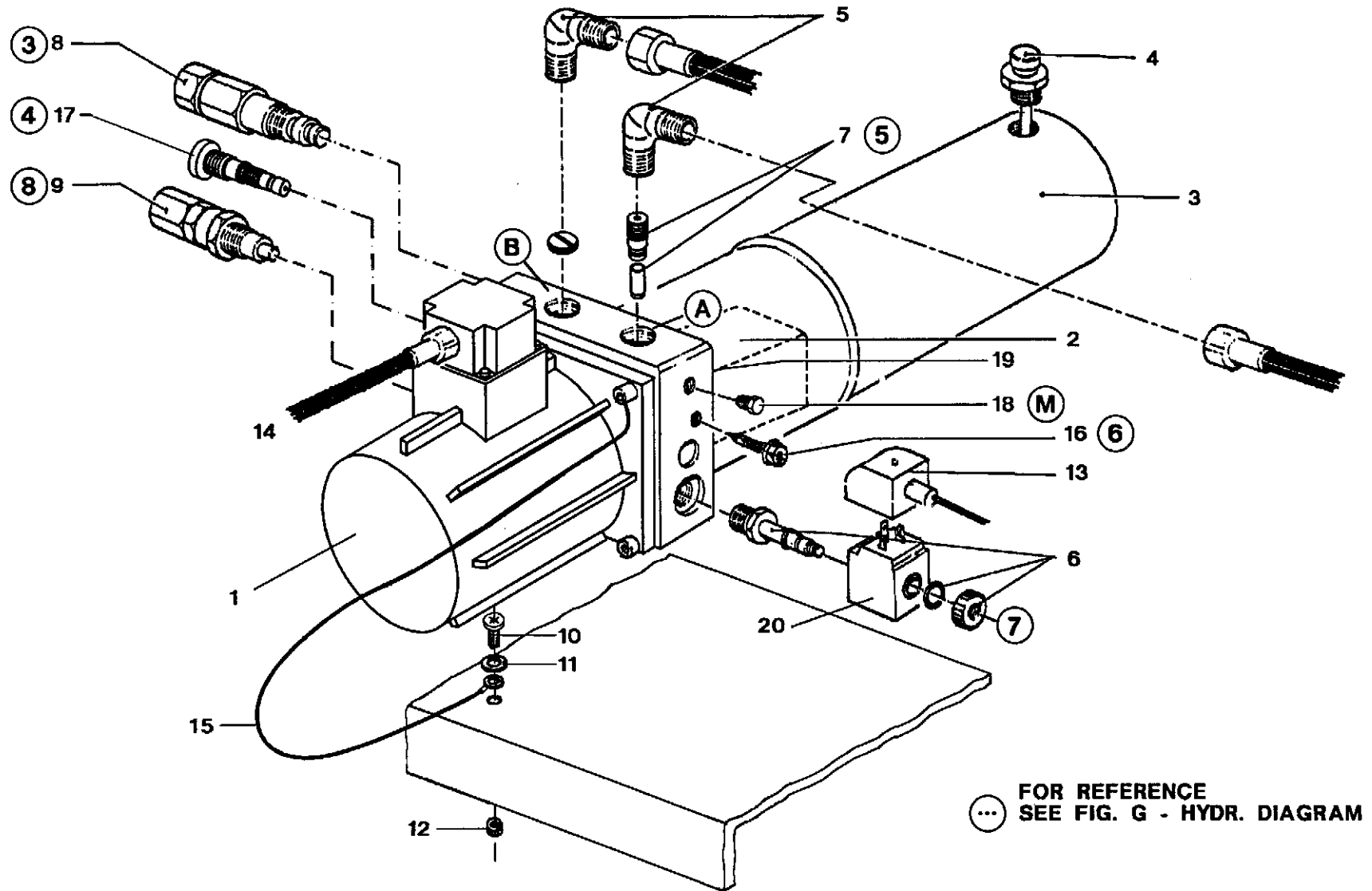


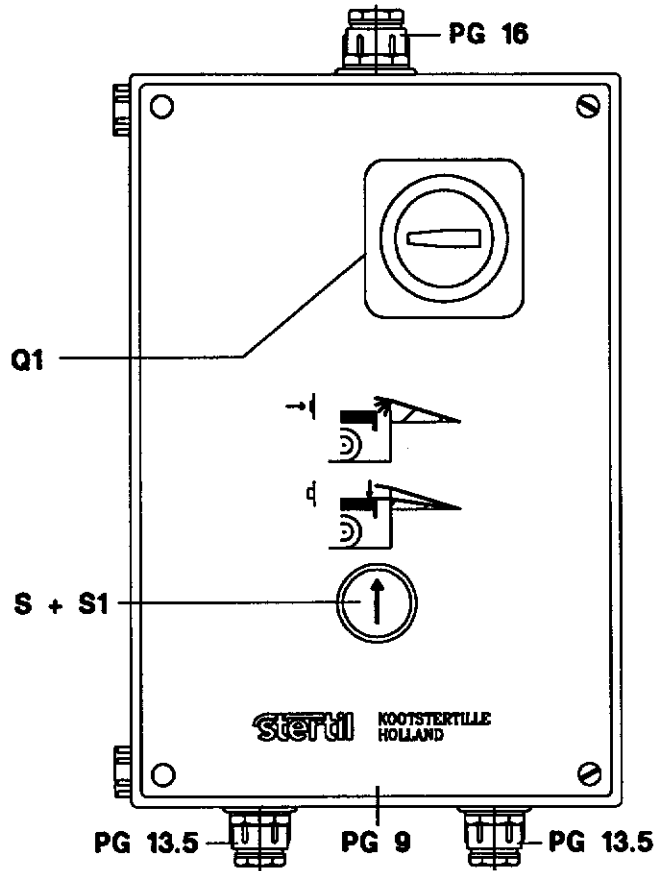
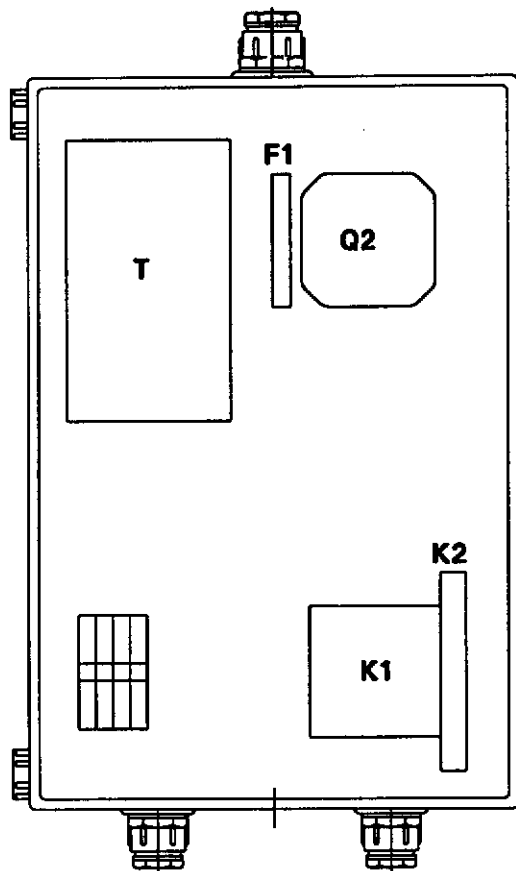
FIG. D - MOTORPUMPUNIT

INDEX	REFERENCE	DESCRIPTION
	02.335.630	Motorpumpunit assembly (excl. fittings)
1	02.335.611	Electro-motor
2	02.335.612	Pump + coupling
3	02.335.613	Tank
4	02.335.614	Cap with dip-stick
5	01.810.502	Adaptor
6	68.308.002	Stop valve
7	02.335.636	Special valve
8	02.335.637	Sequence valve
9	02.335.618	Overflow valve
10	65.034.222	Bolt
11	1038.27.00.43	Washer
12	65.050.124	Nut
13	02.210.021	Electric cable assembly
14	01.810.763	Cable
15	02.335.602	Earth cable
16	02.335.639	Throttle
17	02.335.640	Special valve
18	02.335.621	Plug
19	02.335.622	O-ring tank
20	69.481.501	Coil

FIG. D



**FIG. G - CONTROLBOX 400V (STANDARD)
- CONTROLBOX 230V (OPTION)**



Reference	Description				
	02.210.750	Bedieningskast 400V	Bedienungskaste 400V	Control box 400V	Coffre de commande 400V
	02.219.750 Option	Bedieningskast 230V	Bedienungskaste 230V	Control box 230V	Coffre de commande 230V
Q	69.120.004	Hoofdschakelaar compleet	Hauptschalter Komplet	Main switch complete	Interrupteur principal complet
Q1	69.120.005	Knopdeel	Knopfteil	Button part	Part d'interrupteur
Q2	69.120.006	Schakeldeel	Schalteil	Switch part	Part d'anneau
K1	01.615.652	Magneetschakelaar	Magnetschalter	Magnetic switch	Interrupteur magnetique
F1	69.206.006	Zekering 250mA traag	Sicherung 250mA trag	Fuse 250mA slow	Fusible 250mA lent
	69.206.007 Option	Zekering 400mA traag	Sicherung 400mA trag	Fuse 400mA slow	Fusible 400mA lent
T	69.500.005	Transformator 400V	Transformator 400V	Transformer 400V	Transformateur 400V
	69.500.006 Option	Transformator 230V	Transformator 230V	Transformer 230V	Transformateur 230V
K2	69.156.001	Relais 24V	Relais 24V	Relais 24V	Relais 24V
S	69.141.014	Drukknopschakelaar	Druckknopfschalter	Pushbutton switch	Interrupteur à poussoir
S1	69.141.013	Drukknop	Druckknopf	Pushbutton	Interrupteur à poussoir